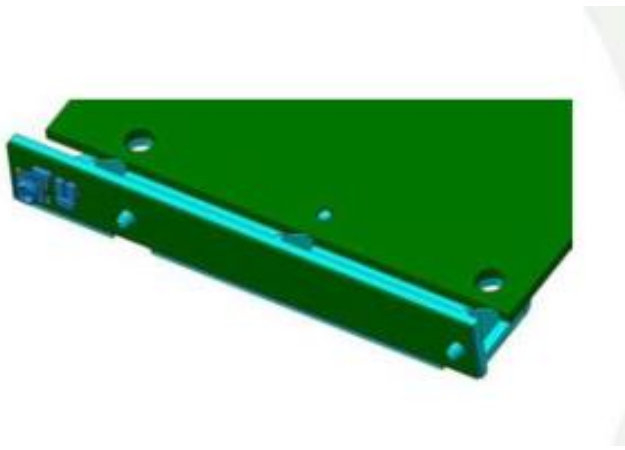


Wireless Antenna for DVB-H EU band receivers Applications

Pulse Part Number CW3510



Features

- High gain
- Edge mount on board
- Coaxial cable feed with I-PEX connector
- Ultra thin, only 6.6mm height
- Compact size WxLxH (45 x 6.6 x 7 mm)
- Weight (1.35 g)
- Lead free materials
- RoHS compliant

Electrical specifications @ +25 °C

Note: Electrical characteristics depend on test board (GP) size and antenna positioning on GP and distance to closest ground plane. Test board size 100x45 mm, clearance to ground plane 7 mm.

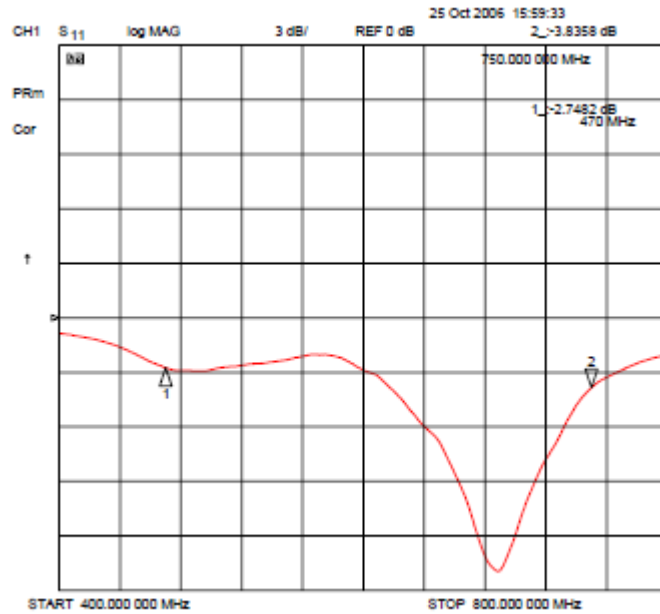
Frequency Range [MHz]	Max Gain [dBi]	Return loss min. [dB]	Impedance [Ω]
470-750	-9 @ 470MHz -6 @ 750MHz	-3	50

Wireless Antenna for DVB-H EU band receivers Applications

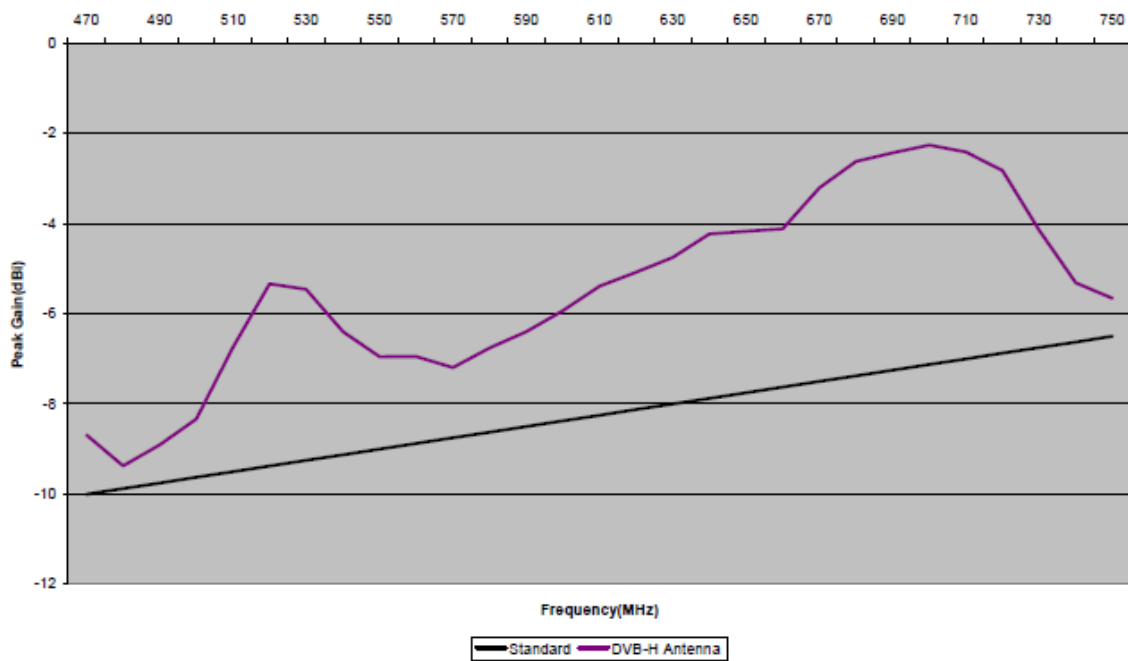
Pulse Part Number CW3510

Typical Electrical Characteristics (T=25 °C)

Typical Return Loss S11 @ 400-800MHz



Free space 3D maximum gain



Wireless Antenna for DVB-H EU band receivers Applications

Pulse Part Number CW3510

Typical Free space Radiation Patterns

