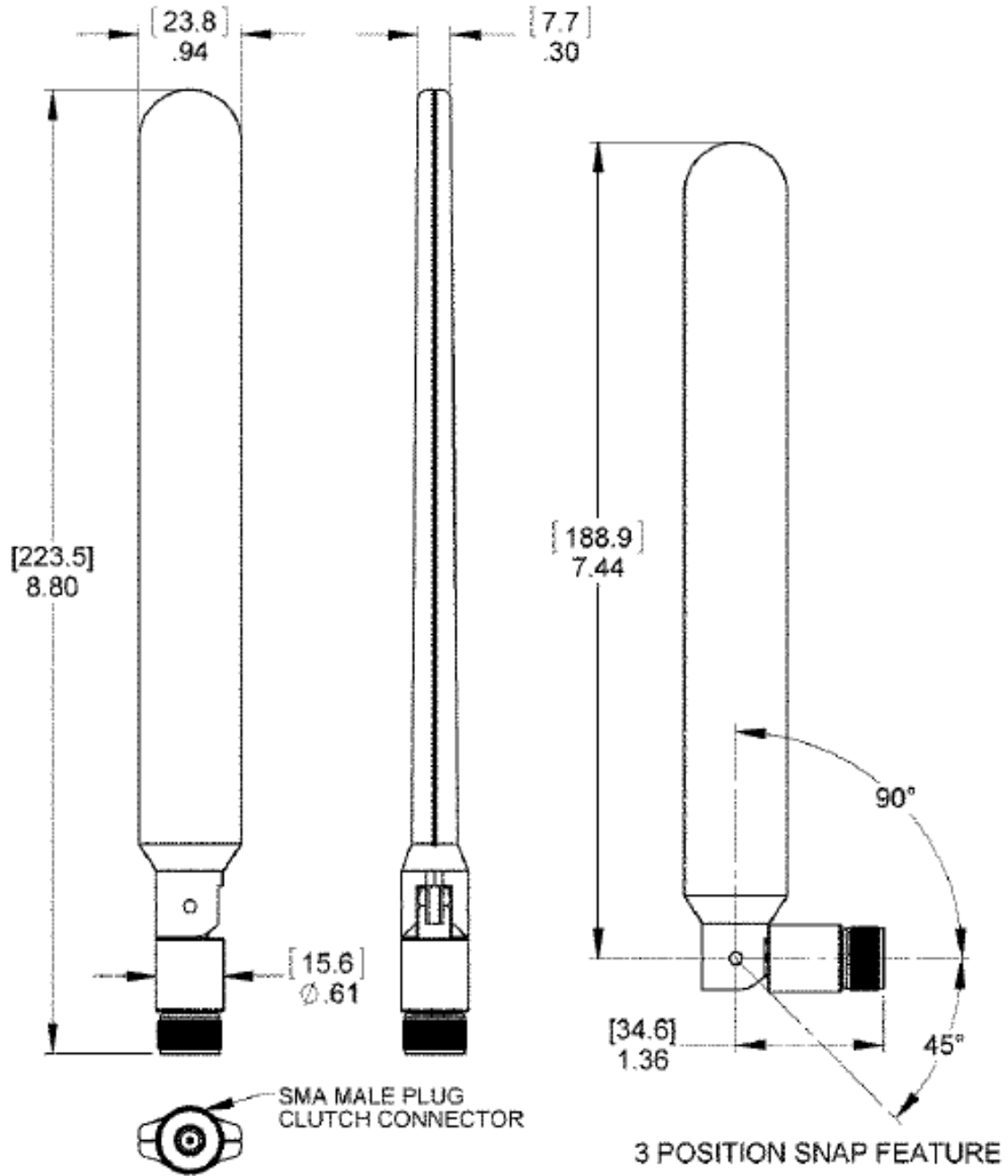


Multi Band Swivel Mount Dipole Antenna

Pulse Part Number CSPDA24700/2700



Environmental Specifications

Operating temperature	-30/+70 ° C
Storage Temperature	-40/+85 ° C

Contact: mobiledeviceantenna.sales@pulseelectronics.com

Multi Band Swivel Mount Dipole Antenna

Pulse Part Number CSPDA24700/2700

Electrical Specifications

Antenna type	Dipole (All electrical performance measured “in free space”)
Frequency	698-960/1710-2170/2500-2700 MHz
Nominal Impedance	50 Ω
VSWR	2.5:1 Max
Average Peak Gain 700	0.6 dBi
Average Peak Gain 1710	1.5 dBi
Average Peak Gain 2500	3.4 dBi
Efficiency	60 % TYP
HPBW / Horizontal Plane	Omni
HPBW / Vertical Plane 700	57 ° TYP
HPBW / Vertical Plane 1710	54 ° TYP
HPBW / Vertical Plane 2500	36 ° TYP
Polarization	Vertical
Power withstanding	3 W
Connector type	SMA-Male (Clutch style)

Mechanical Specifications

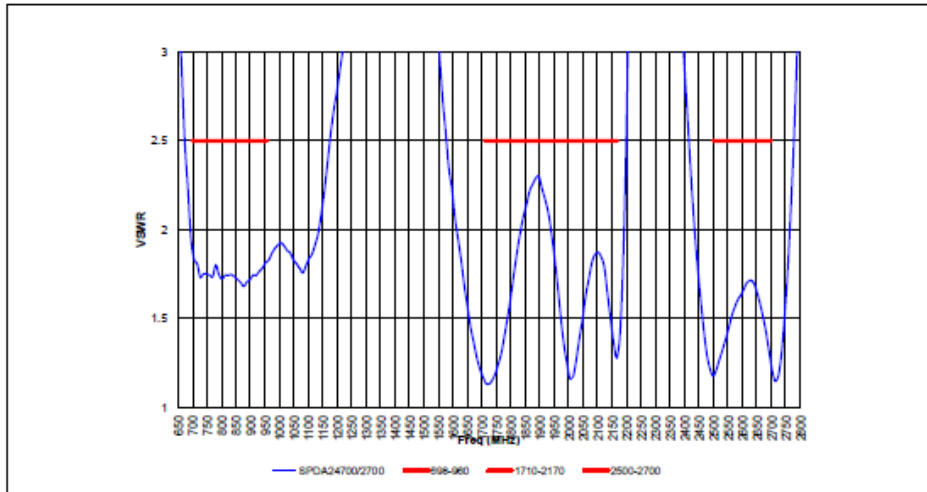
Plastic Radome	PC/ABS
Color	Black
Flammability (Radome)	UL94 V-O
Weight	45.4 g
Positions	0° , 45° & 90°
Overall length	8.8 inches

Multi Band Swivel Mount Dipole Antenna

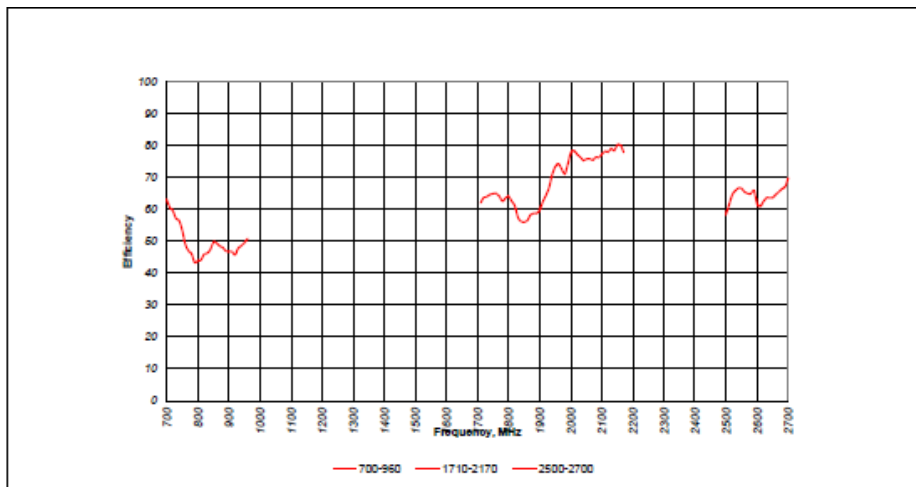
Pulse Part Number CSPDA24700/2700

Typical Electrical Characteristics

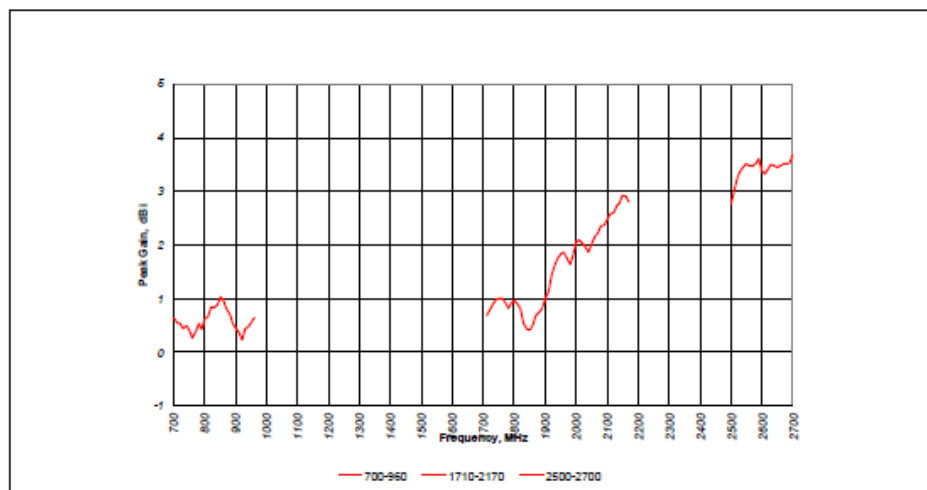
VSWR



Efficiency



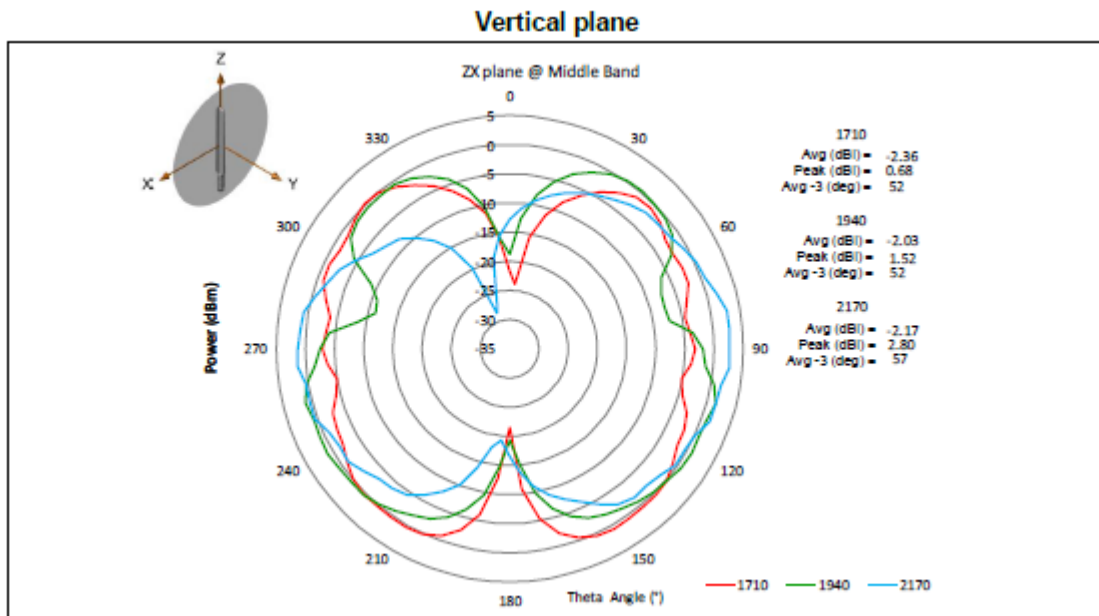
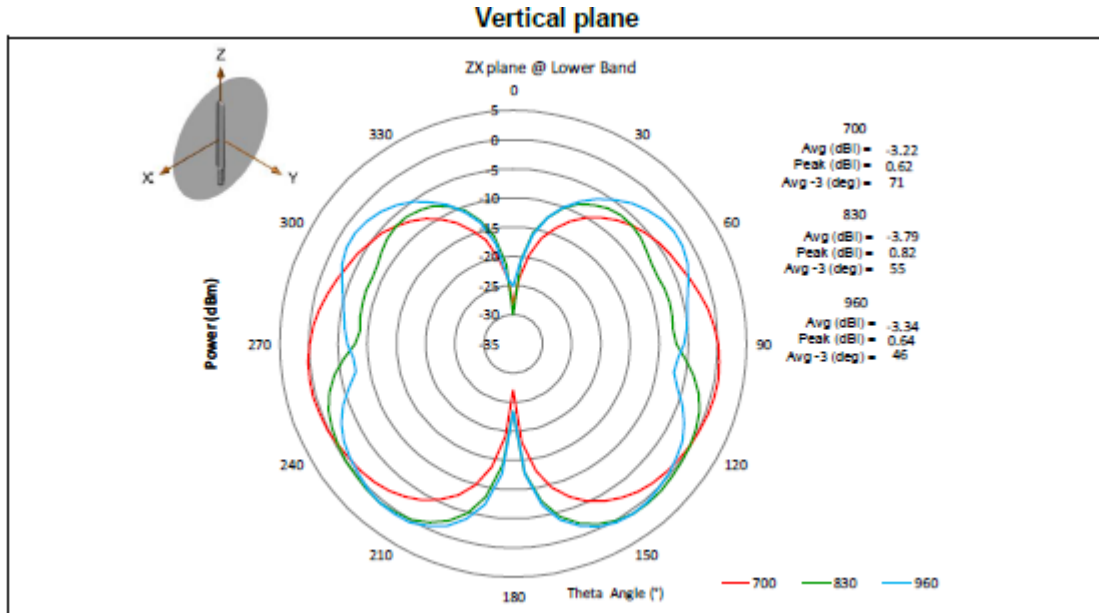
Peak Gain



Multi Band Swivel Mount Dipole Antenna

Pulse Part Number CSPDA24700/2700

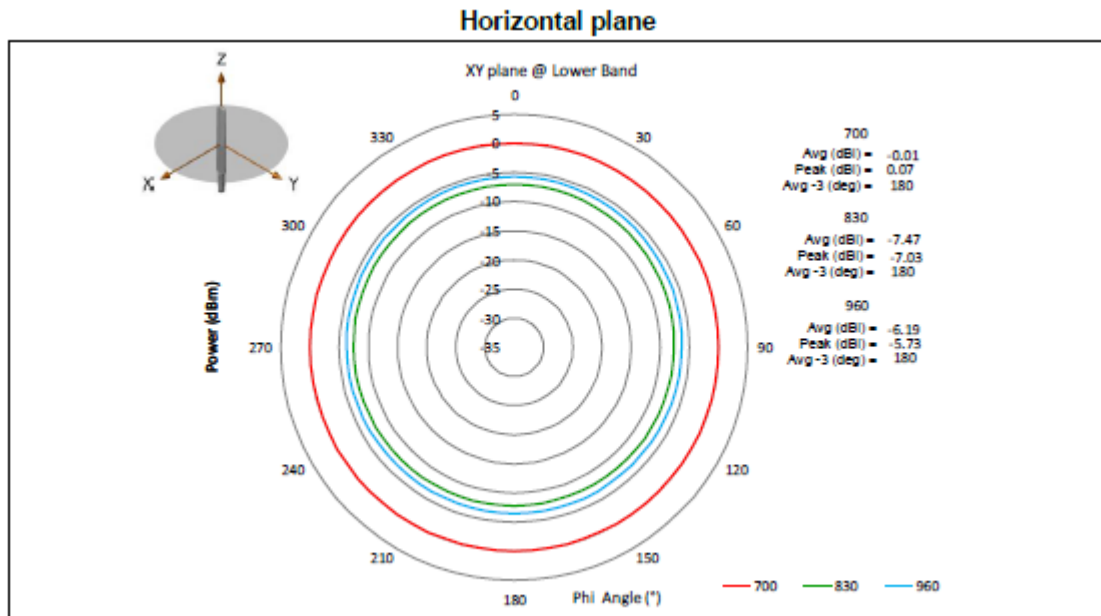
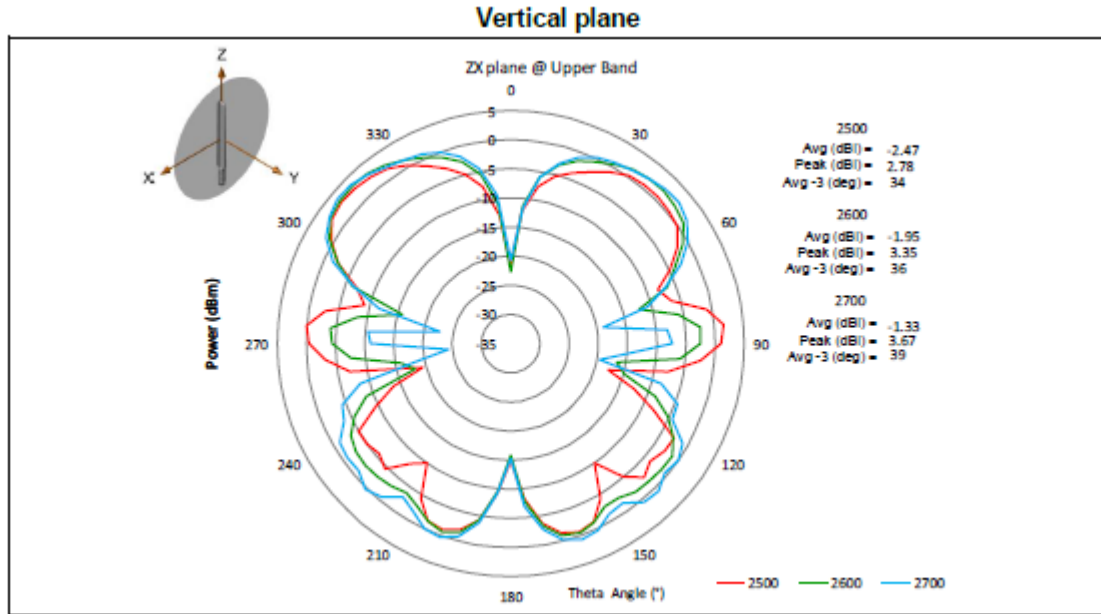
Typical Radiation Patterns



Multi Band Swivel Mount Dipole Antenna

Pulse Part Number CSPDA24700/2700

Typical Radiation Patterns



Multi Band Swivel Mount Dipole Antenna

Pulse Part Number CSPDA24700/2700

Typical Radiation Patterns

