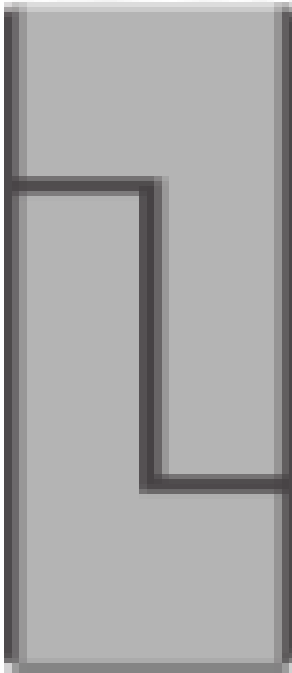


LTE Rx Band13 Ceramic Chip Antenna

Pulse Part Number CW3076



Features

- Omni directional radiation
- Low profile
- Compact size W x L x H (10 x 3.2 x 1.5 mm)
- Low weight (240 mg)
- Lead free materials
- Fully SMD compatible
- Lead free soldering compatible
- Tape and reel packing
- RoHS Compliant Product

Applications

- LTE RX Band 13
- 746 – 756 MHz

Electrical specifications @ +25 ° C

Note: Electrical characteristics depend on test board (GP) size and antenna positioning on GP and Ground Clearance area size.

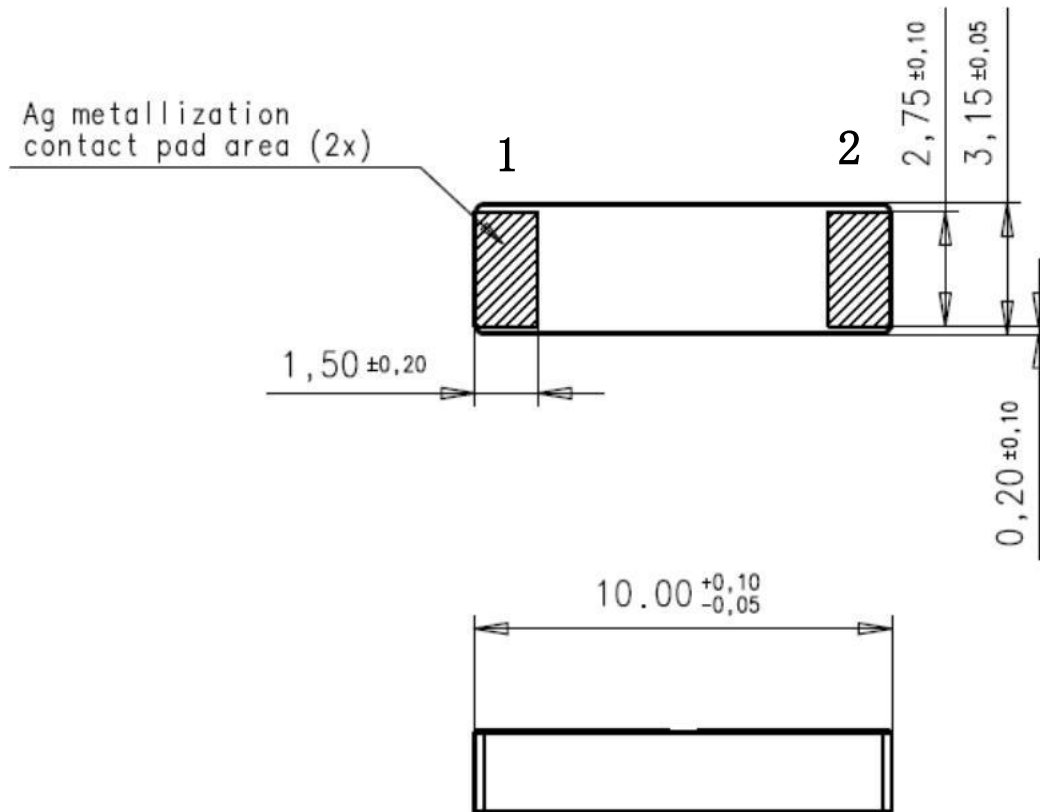
Typical performance (testboard size 250x150 mm, PWB ground clearance area 16 x 6.25 mm)

Frequency Range [MHz]	Max Gain [dBi]	Return loss min. [dB]	Efficiency [%]/[dB]	Impedance [Ω]	Operating Temperature [$^{\circ}$ C]
746-756	1.5(peak) 1(band edges)	-8	80 / -1(peak) 70/-1.55(band edges)	50	-40 to +85

LTE Rx Band13 Ceramic Chip Antenna

Pulse Part Number CW3076

Terminal Configuration and antenna dimensions



No.	Terminal Name	Terminal Dimensions
1	Feed /GND	1.5 x 2.75 mm
2	Feed /GND	1.5 x 2.75 mm
Antenna is symmetrical. Either of terminals 1 or 2 can be Feed / GND		

LTE Rx Band13 Ceramic Chip Antenna

Pulse Part Number CW3076

Antenna PWB Layout

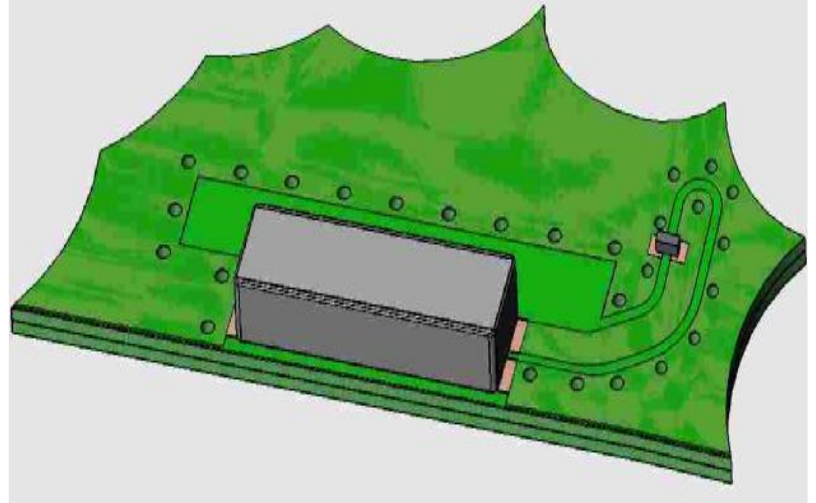
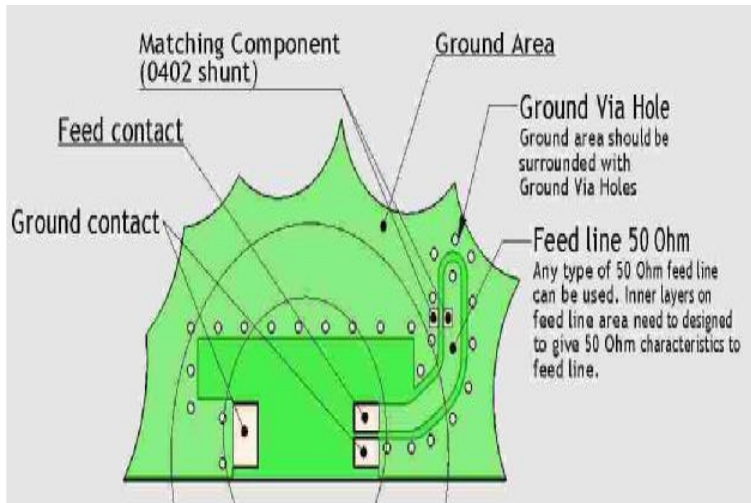
Ground cleared under antenna, clearance area 16 x 6.25 mm.

Matching and tuning component values depend on application and surrounding mechanics/ materials.

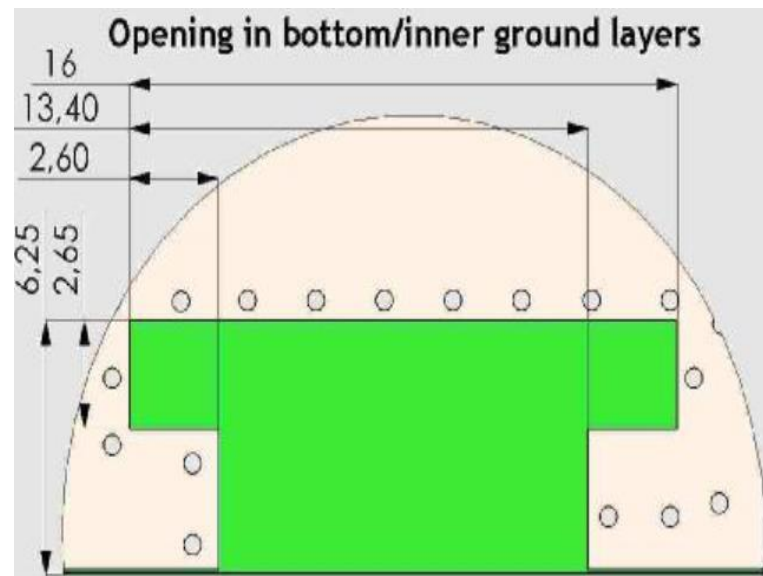
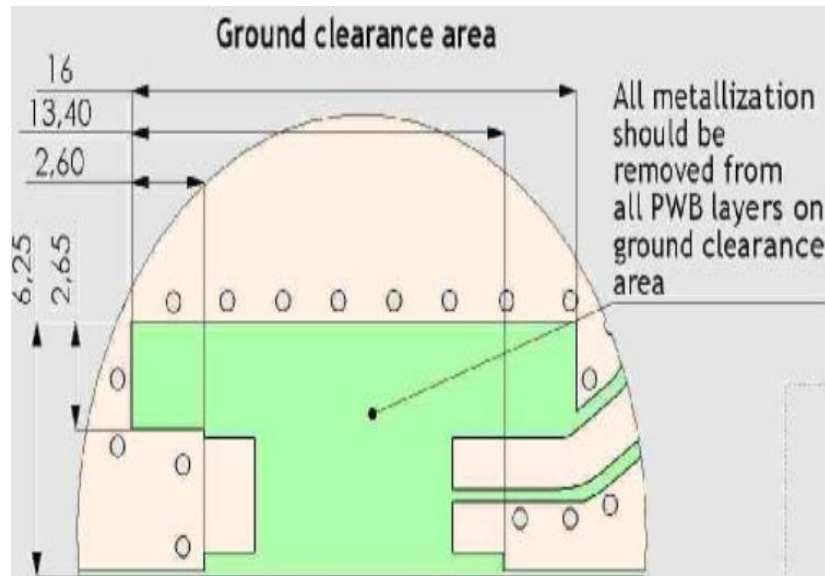
Feed line should be designed to match 50 Ω characteristic impedance, depending on PWB material and thickness.

Recommended test board layout for electrical characteristic measurement, test board outline size 250 x 150 mm.

Note: All dimensions are in metric system.



Ground clearance area

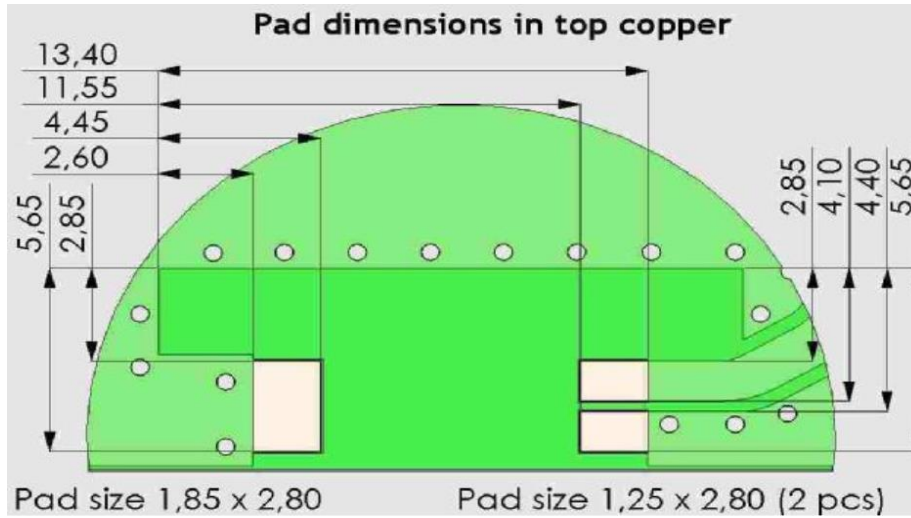


Contact: mobiledeviceantenna.sales@pulseelectronics.com

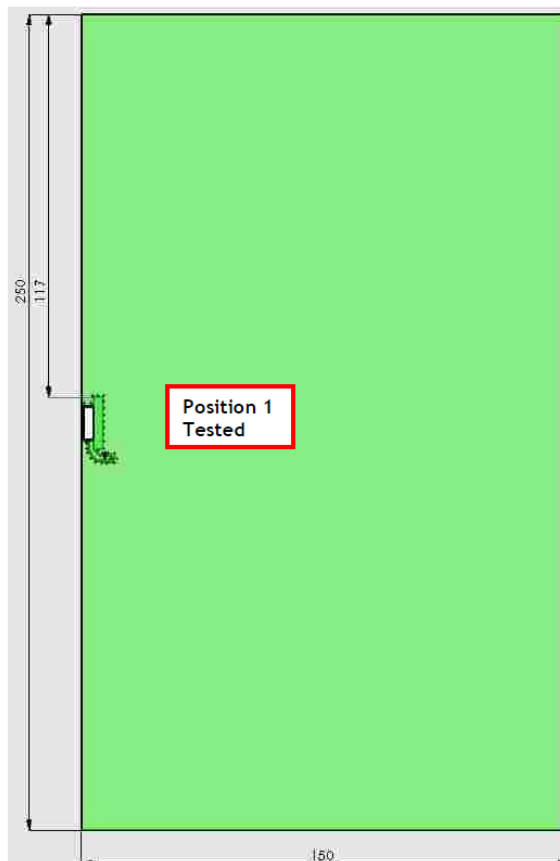
LTE Rx Band13 Ceramic Chip Antenna

Pulse Part Number CW3076

PWB pad dimensions



Recommended antenna position on PWB



Contact: mobiledeviceantenna.sales@pulseelectronics.com

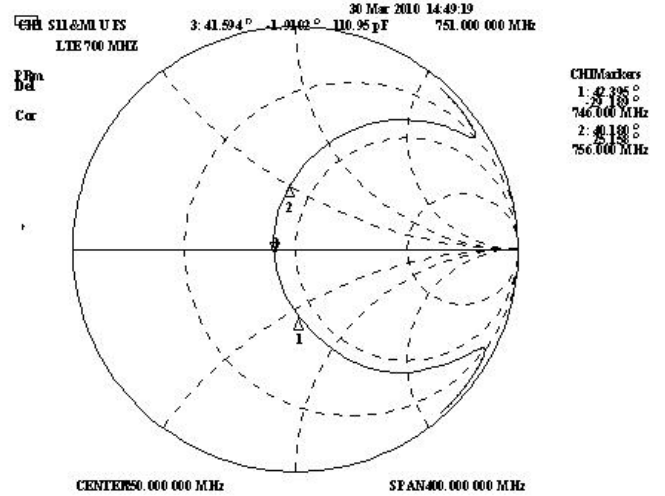
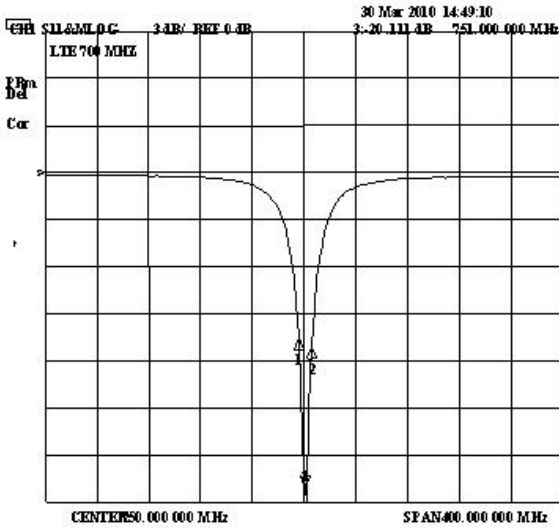
LTE Rx Band13 Ceramic Chip Antenna

Pulse Part Number CW3076

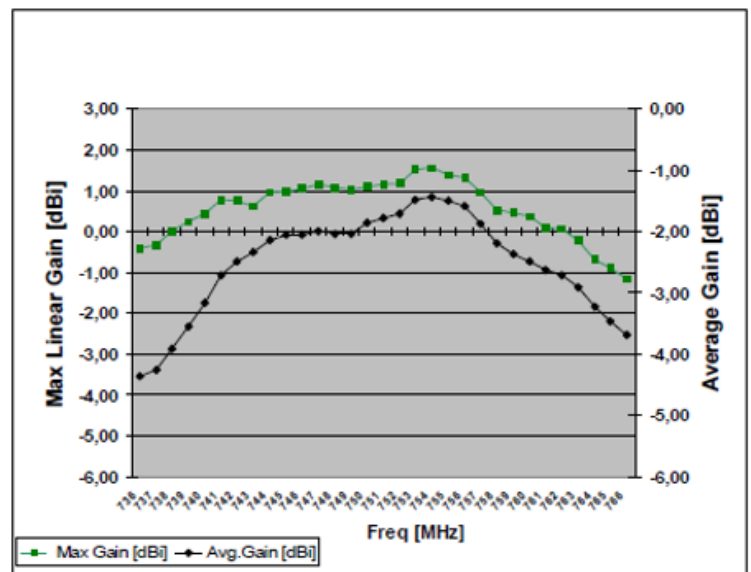
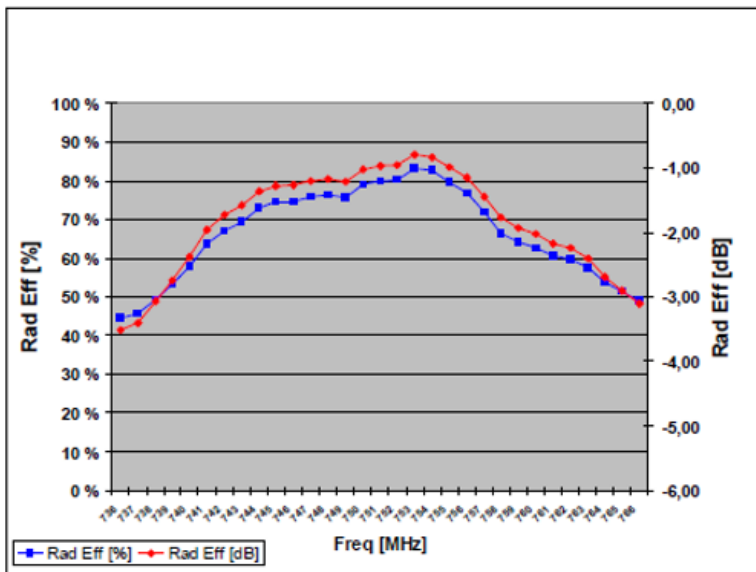
Typical Electrical Characteristics (T=25 °C)

Measured on the 250 x 150 mm test board with matching circuit (2.2 pF shunt matching capacitor on feed).

Typical Return Loss S11/ impedance



Typical free space efficiency and maximum gain



Contact: mobiledeviceantenna.sales@pulseelectronics.com

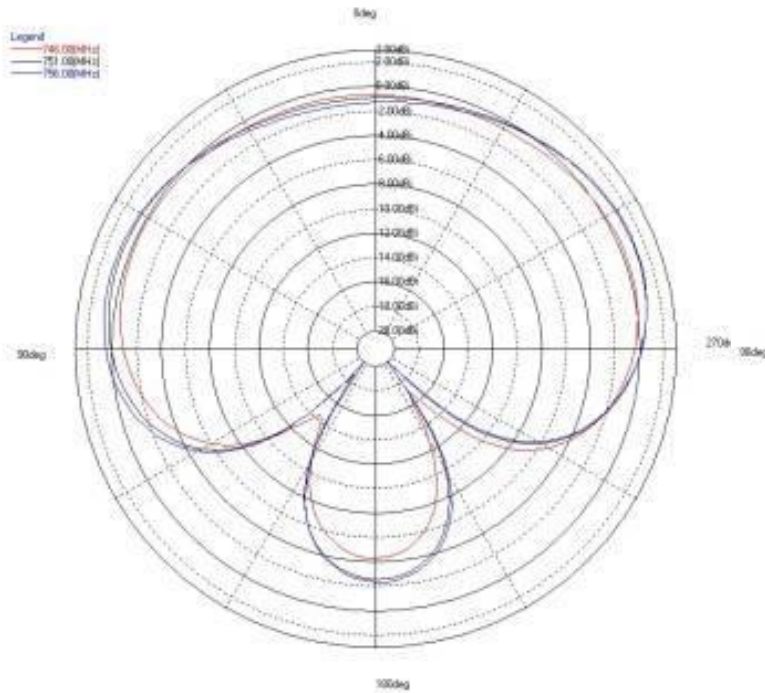


LTE Rx Band13 Ceramic Chip Antenna

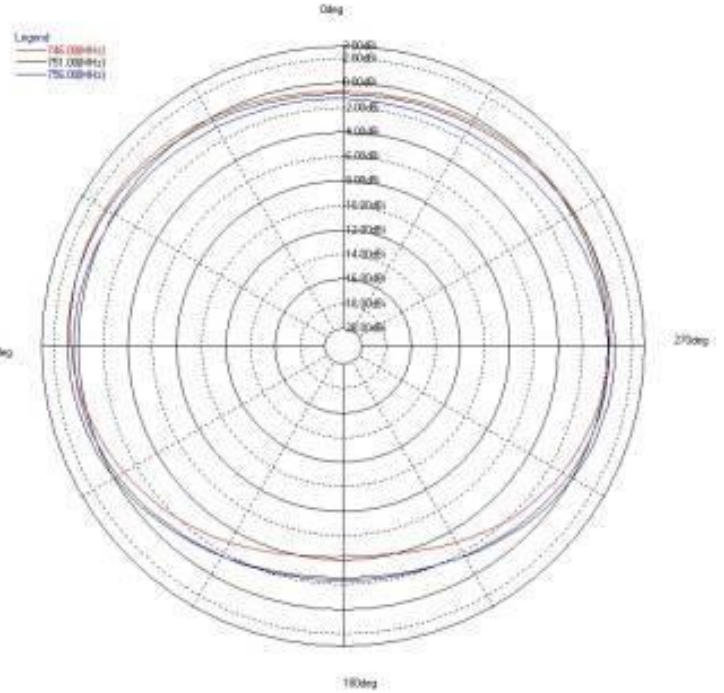
Pulse Part Number CW3076

BT Typical Free Space Radiation Patterns

XZ-PLANE



ZY-PLANE



XY-PLANE

