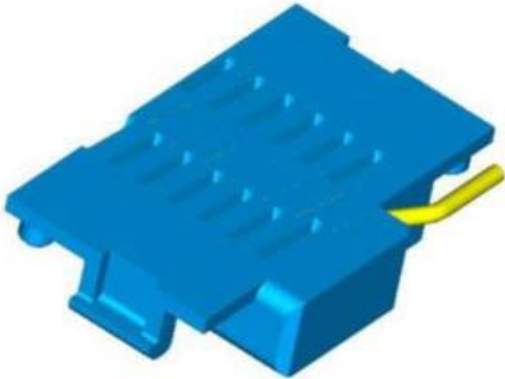


ISM 900MHz Helical SMD Antenna

Pulse Part Number CW3113



Features

- Low profile (2.5mm, embedded to board)
- Snap in fixing to board
- Compact size WxLxH (12.4 x 8 x 2.5 mm)
- Low weight (400 mg)
- Lead Free materials
- Fully SMD compatible
- Lead free soldering compatible
- Tape and reel packing
- RoHS Compliant Product

Applications

- 900MHz ISM Band Systems

Electrical specifications @ +25 °C

Note: Electrical characteristics depend on test board (GP) size and antenna positioning on GP and Ground Clearance area size.

Typical performance (testboard size 100x40 mm, PWB ground clearance area 8.00 x 40.00 mm)

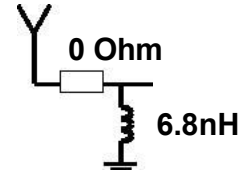
Frequency Range [MHz]	Max Gain [dBi]	Return loss min. [dB]	Efficiency [%]/[dB]	Impedance [Ω]	Operating Temperature [$^{\circ}$ C]
902 – 928	0.8(peak) -0.3(band edges)	-10	66/-1.8(peak) 51/-2.9(band edges)	50	-40 to +85

ISM 900MHz Helical SMD Antenna

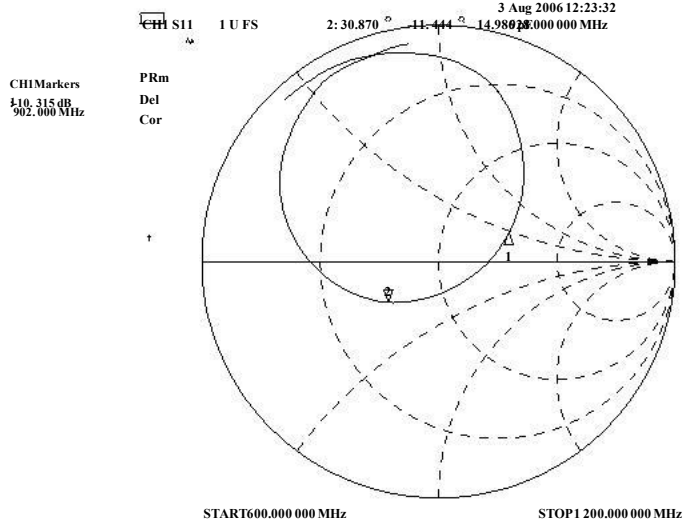
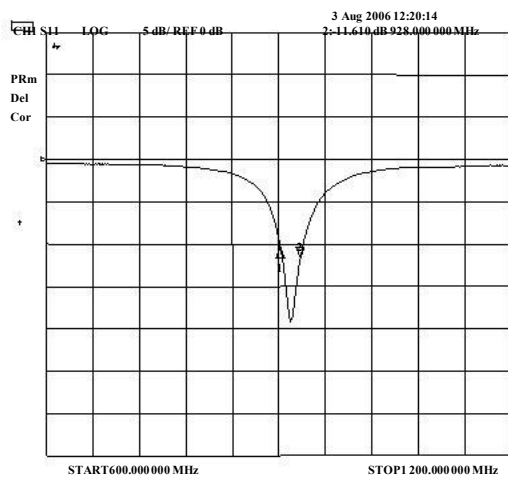
Pulse Part Number CW3113

Typical Electrical Characteristics (T=25 °C)

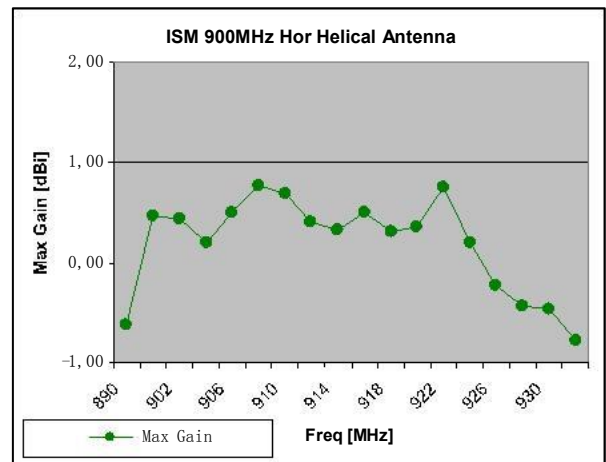
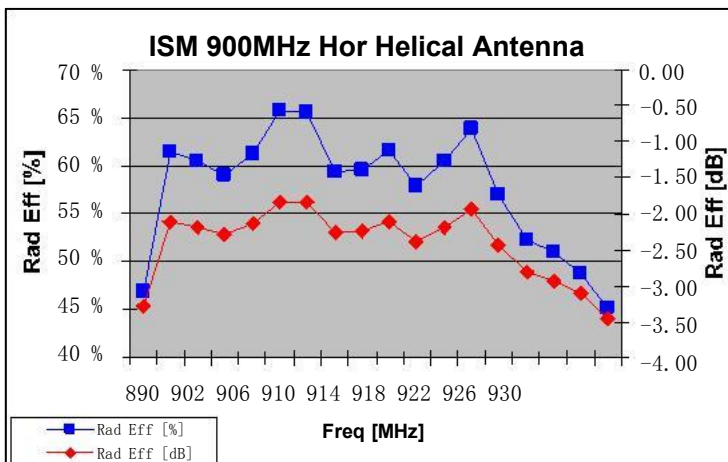
Measured on the 100x40mm test board with matching circuit



Typical Return Loss S11/ impedance



Free space efficiency and maximum gain



Contact: mobiledeviceantenna.sales@pulseelectronics.com



ISM 900MHz Helical SMD Antenna

Pulse Part Number CW3113

Typical Free space Radiation Patterns

