

# GPS/GLONASS Pin Mounted Ceramic Patch Antenna

Pulse Part Number CW3223

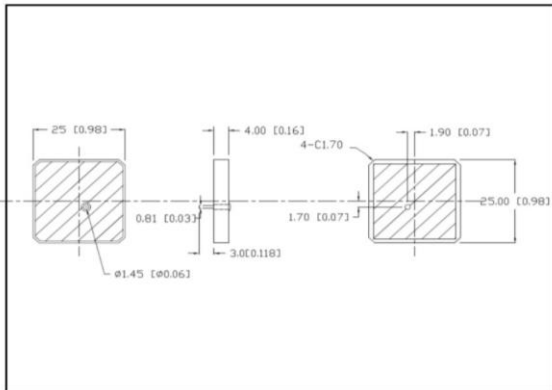


## Features

- 1575/1602 MHz Dualband single feed antenna
- RHCP Polarization
- Zenith Gain +4dBiC
- Pin mounting
- Tray packing

## Applications

- GPS and GLONASS satellite receivers
- Tracking, navigation, satellite positioning
- Fleet management
- Asset tracking



## Mechanical specifications

Material	Metallization	Size [mm]	Weight [g]	Mounting type
Ceramic	Silver	25x25x4	9.3	Pin feed

## Electrical specifications @ +25 °C

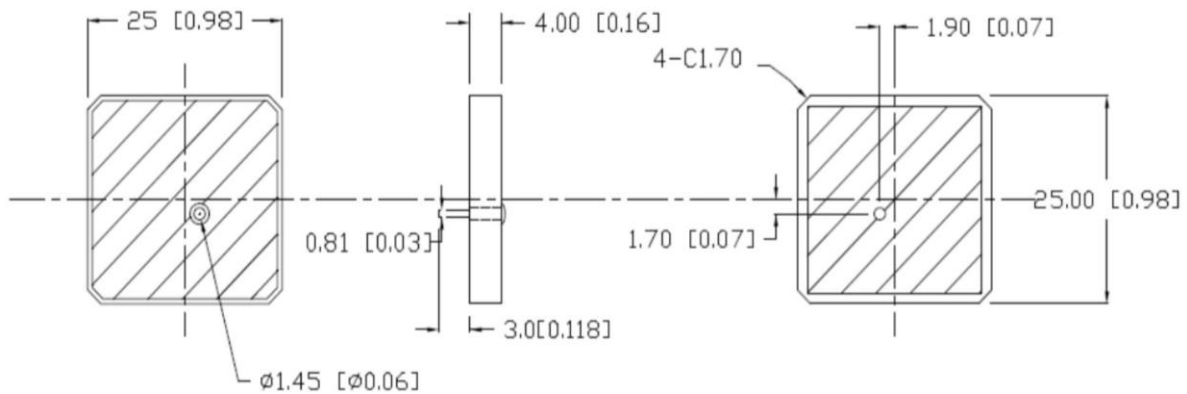
Note: Electrical characteristics depend on test board (GP) size and antenna positioning on GP and Ground Clearance area size. Reference testboard size 70x70 mm.

Frequency Range [MHz]	RHCP Gain [dBiC]	Polarization	Zenith Axial Ratio	Return loss [dB]	Nominal Impedance [ $\Omega$ ]	Operating Temperature [ $^{\circ}$ C]
1575.42 +/-1.023 1602.5625 +/-4	4	RHCP	3.8	<-10	50	-40 to +85

# GPS/GLONASS Pin Mounted Ceramic Patch Antenna

Pulse Part Number CW3223

## Mechanical Drawing



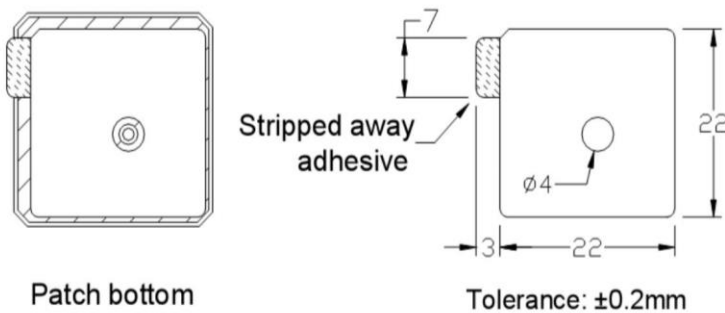
## Adhesive Transfer Tape Specification

TAPE: Nitto 5000NS 22\*22\*0.16mm

Thickness :  $0.16 \pm 5\%$  mm

Release Liner : 0.1mm (typ.) printed paper or paper

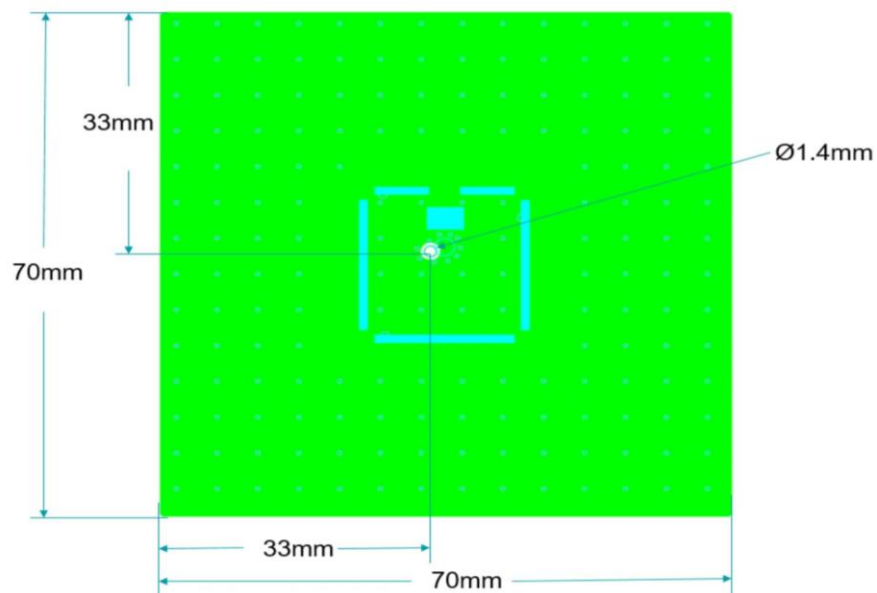
Dimension : mm



Patch bottom

Tolerance:  $\pm 0.2$ mm

## Test Condition Ground Plane(Example for PCB 1 mm)

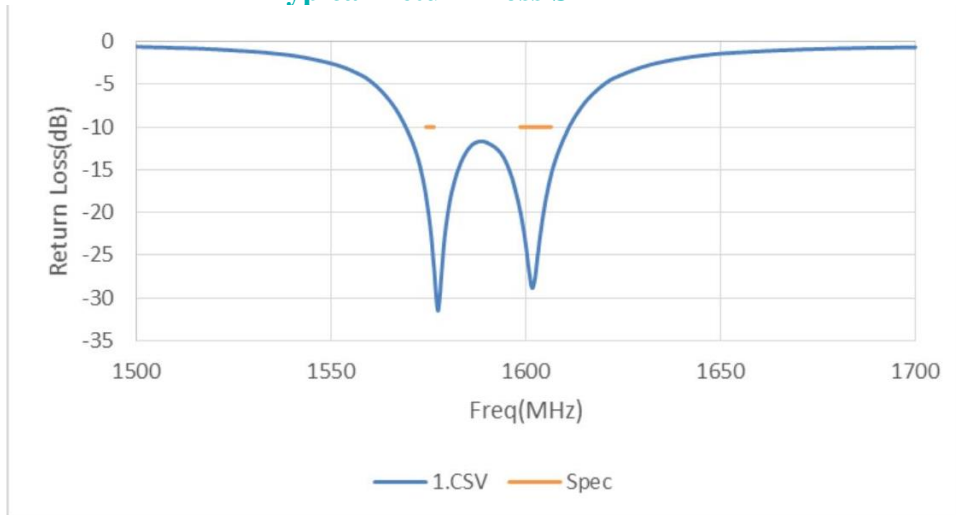


# GPS/GLONASS Pin Mounted Ceramic Patch Antenna

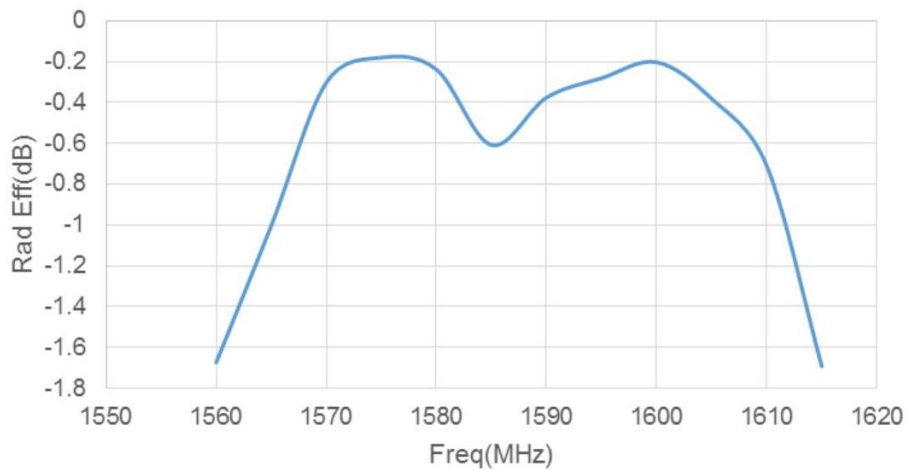
Pulse Part Number CW3223

## Typical Electrical Characteristics (T=25 °C)

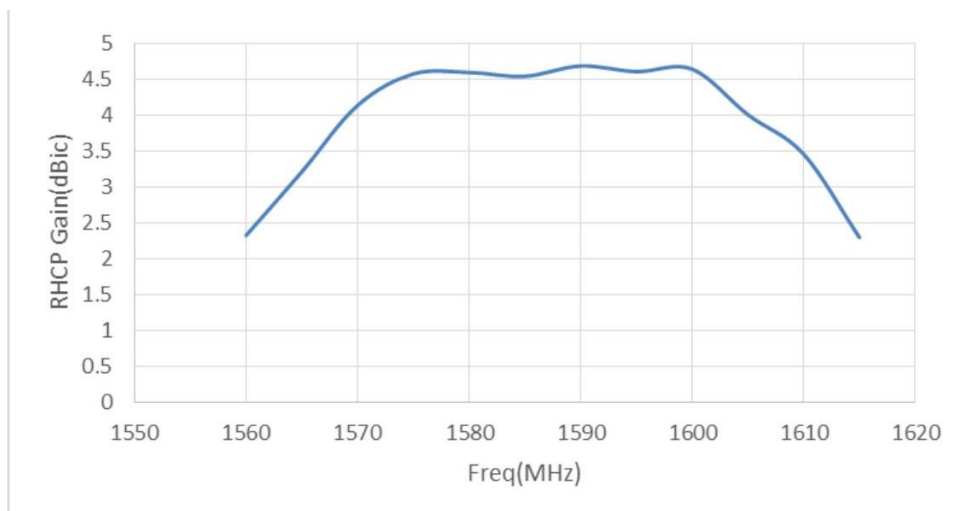
### Typical Return Loss S11



### Total Radiation Efficiency



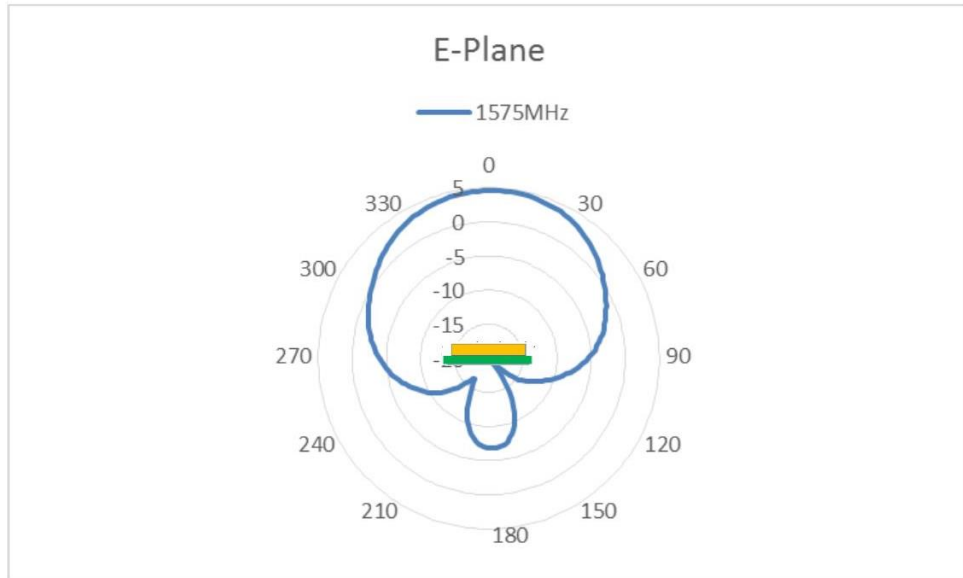
### Zenith RHCP Gain



# GPS/GLONASS Pin Mounted Ceramic Patch Antenna

Pulse Part Number CW3223

## Typical Free space GPS Radiation Patterns



## Typical Free space GLONASS Radiation Patterns

