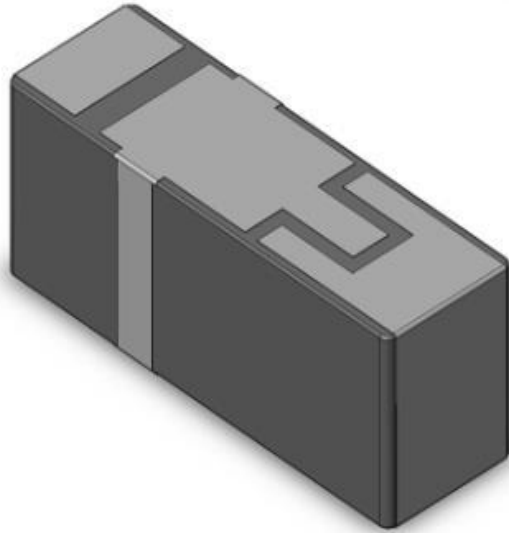


GPS/BT Single Feed Ceramic Chip Antenna

Pulse Part Number CW3065



Features

- Omni directional radiation
- Low profile
- Compact size W x L x H (10 x 3.2 x 4 mm)
- Low weight (600 mg)
- Lead free materials
- Fully SMD compatible
- Lead free soldering compatible
- Tape and reel packing
- RoHS Compliant Product

Applications

- GPS L1 band (1.575 GHz)
- Bluetooth, WLAN, WIFI(2.4 – 2.5 GHz)

Electrical specifications @ +25 ° C

Note: Electrical characteristics depend on test board (GP) size and antenna positioning on GP and Ground Clearance area size. Matching and tuning circuit shunt 1.0 nH inductor.

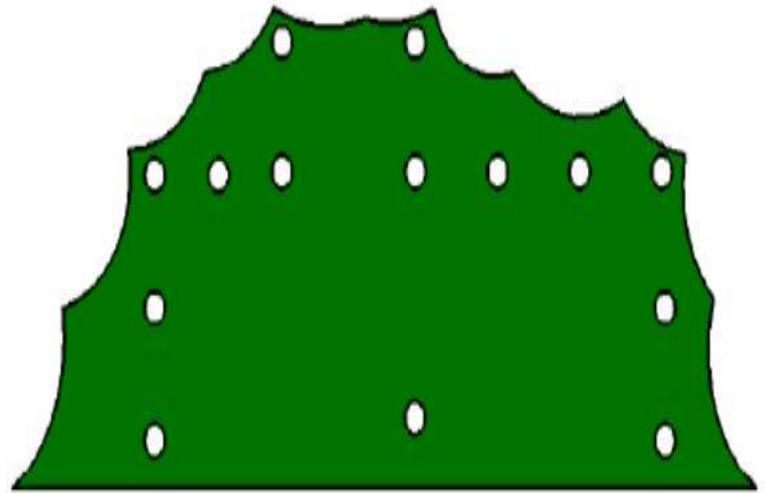
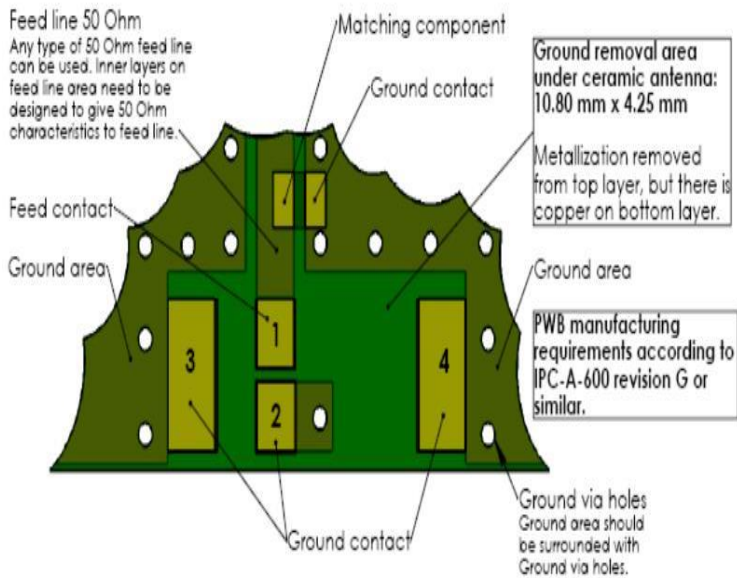
Typical performance (testboard size 100 x 40 mm, PWB ground clearance area 10.8 x 4.25 mm)

Frequency Range [MHz]	Return loss min. [dB]	Efficiency [%]/[dB]	Impedance [Ω]	Operating Temperature [$^{\circ}$ C]
1575.42 +/-10	-10(peak) -6(+/-10 MHz)	45 / -3.5(peak) 35 / -4.55(+/-10 MHz)	50	-40 to +85
2400 – 2480	-10(peak) -5(band edges)	70 / -1.55(peak) 45 / -3.5(band edges)	50	-40 to +85

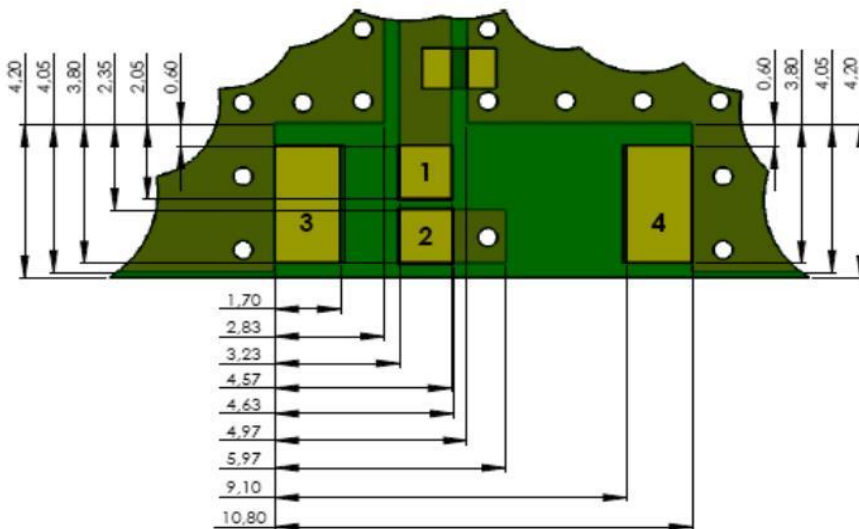
GPS/BT Single Feed Ceramic Chip Antenna

Pulse Part Number CW3065

Terminal Configuration PWB Layout



No ground clearance area under antenna on bottom surface of PWB



No.	Terminal Name	Terminal Dimensions
1	Feed	1.34 x 1.45 mm
2	GND	1.40 x 1.45 mm
3	GND	3.20 x 1.70 mm
4	GND	3.20 x 1.70 mm

PWB Layout under ceramic antenna

Contact: mobiledeviceantenna.sales@pulseelectronics.com

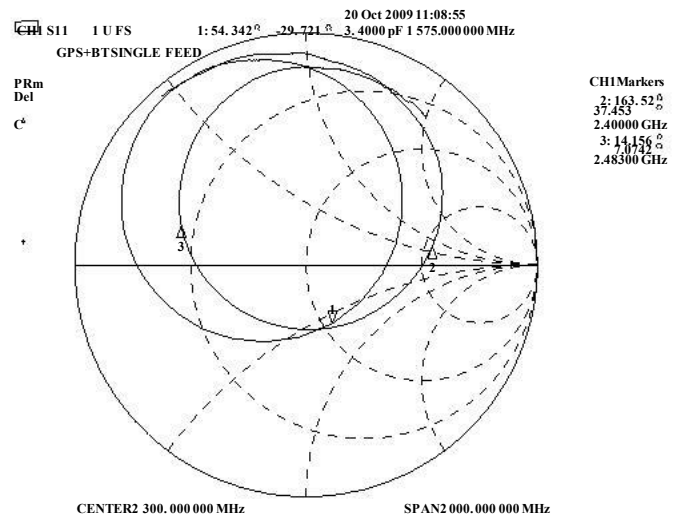
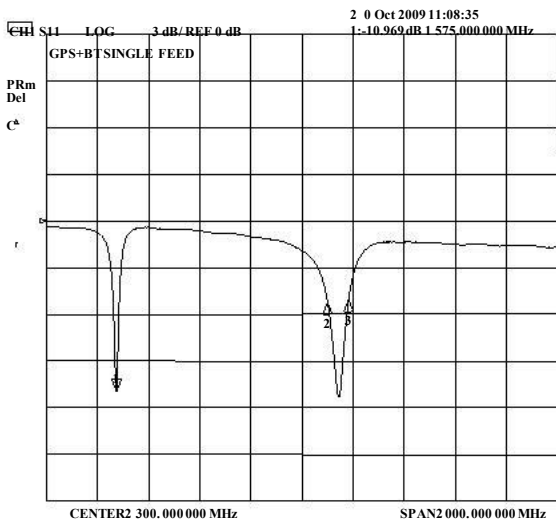
GPS/BT Single Feed Ceramic Chip Antenna

Pulse Part Number CW3065

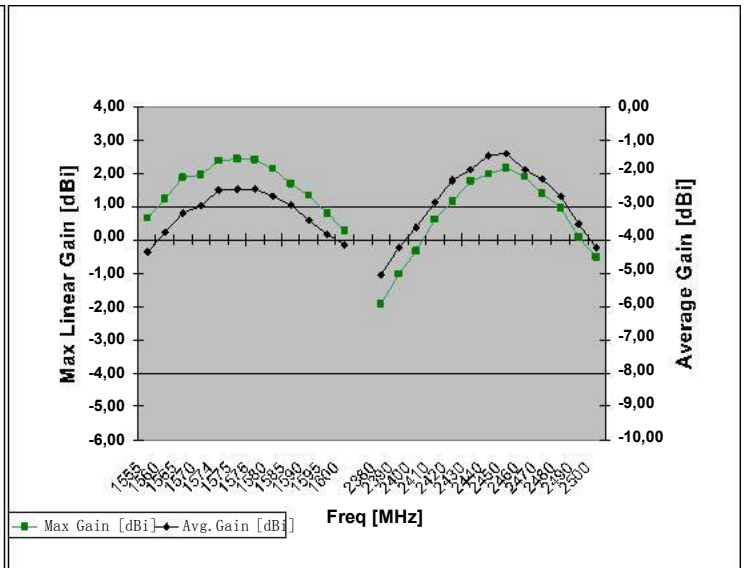
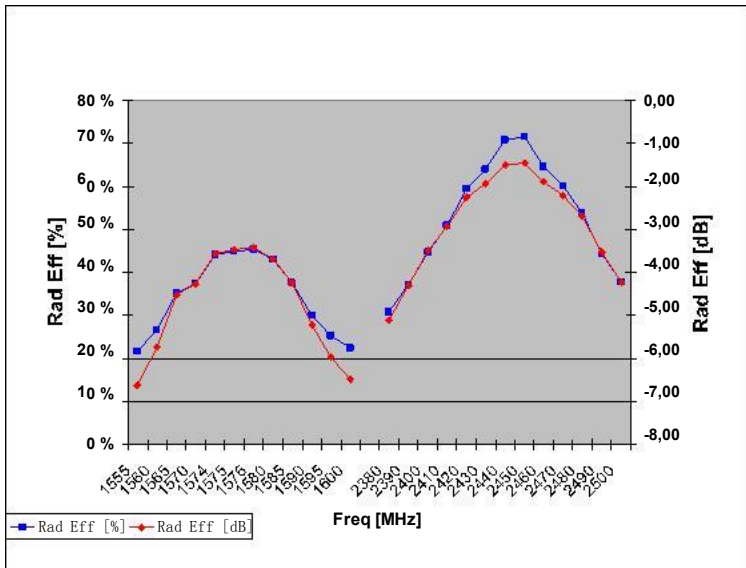
Typical Electrical Characteristics (T=25 ° C)

Measured on test pwb with matching circuit (1.0 nH shunt matching inductor on feed).

Typical Return Loss S11/ impedance



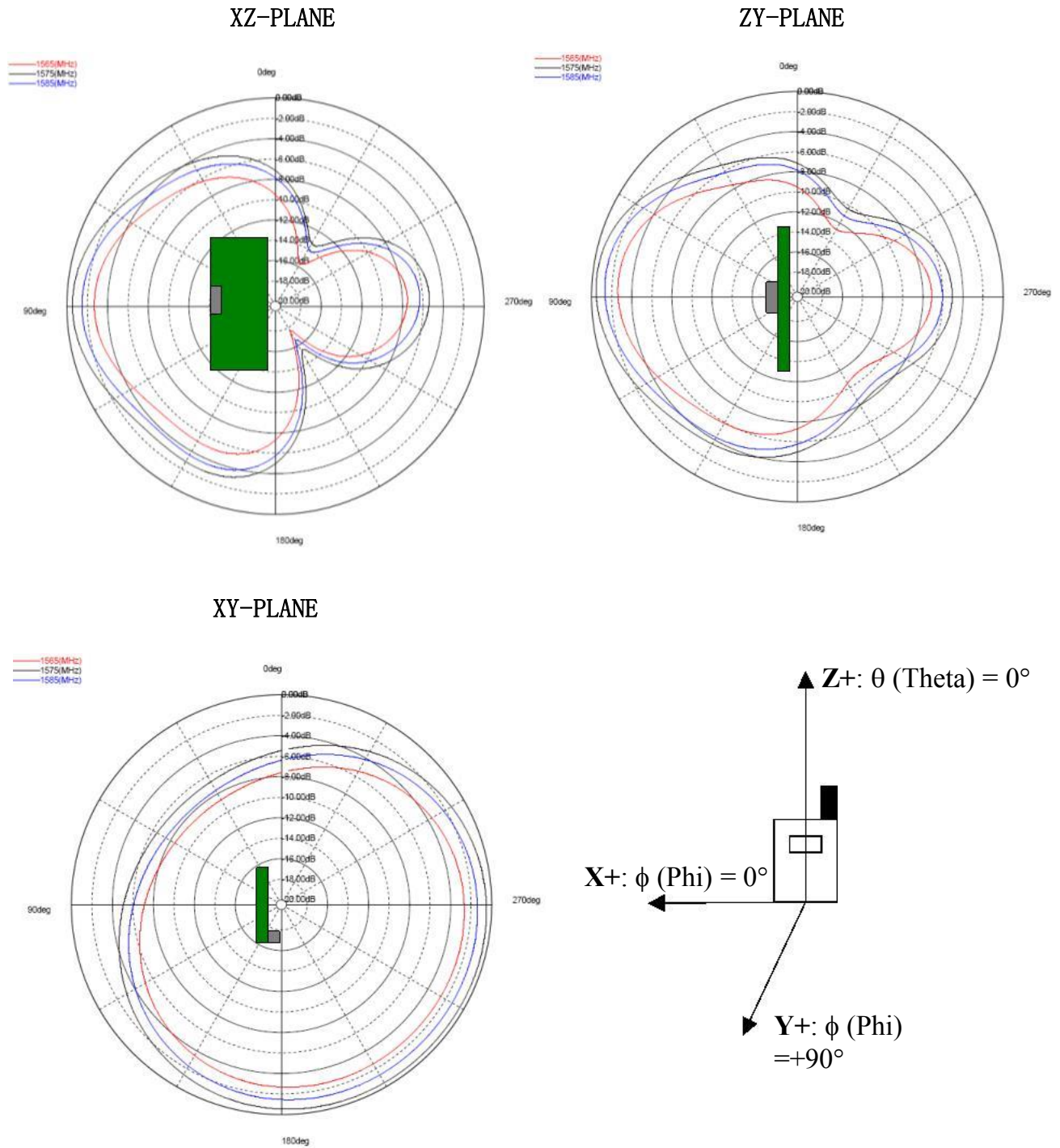
Free space efficiency and gain



GPS/BT Single Feed Ceramic Chip Antenna

Pulse Part Number CW3065

GPS Typical Free space Radiation Patterns

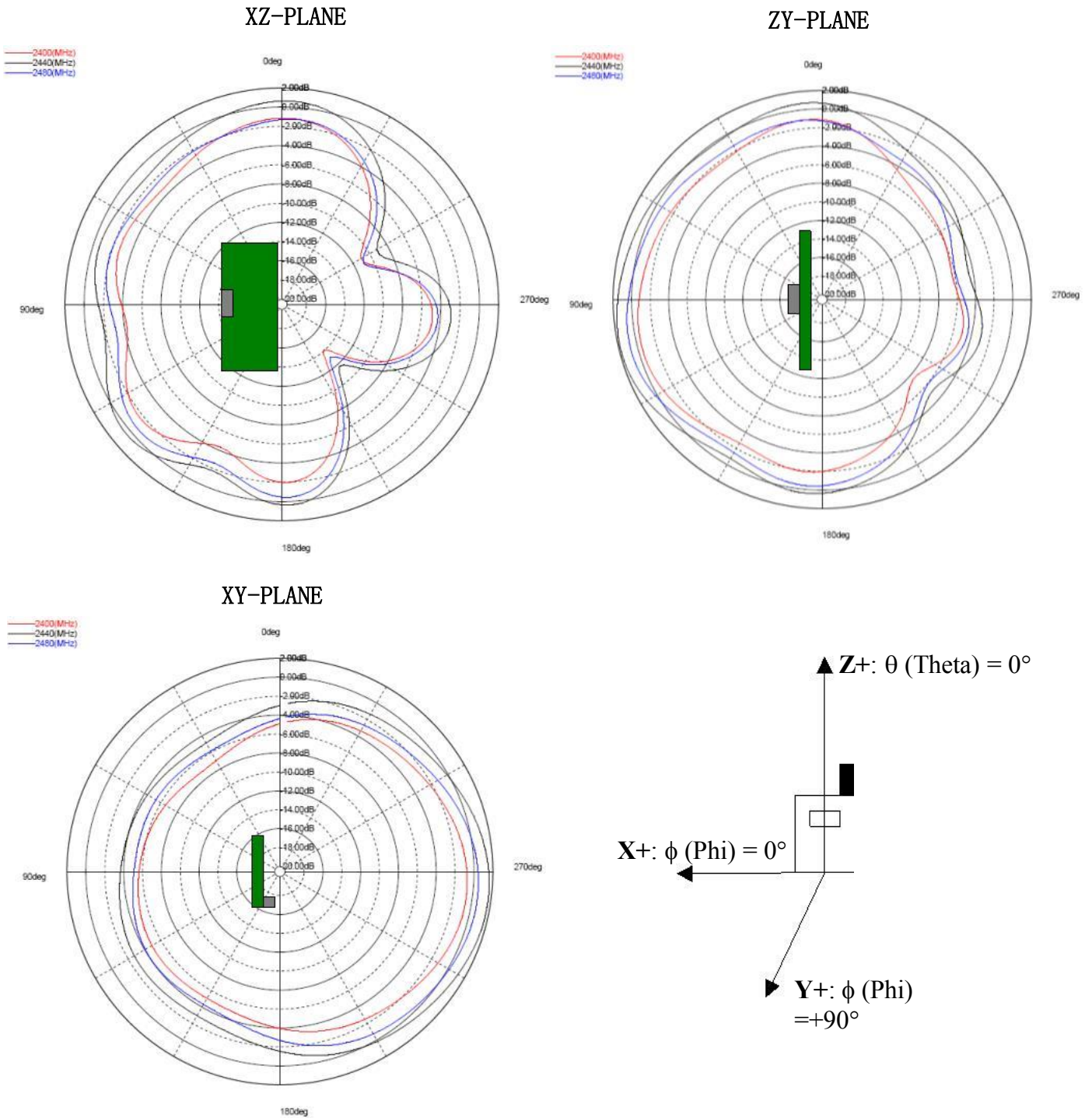


Contact: mobiledeviceantenna.sales@pulseelectronics.com

GPS/BT Single Feed Ceramic Chip Antenna

Pulse Part Number CW3065

BT Typical Free space Radiation Patterns



Contact: mobiledeviceantenna.sales@pulseelectronics.com