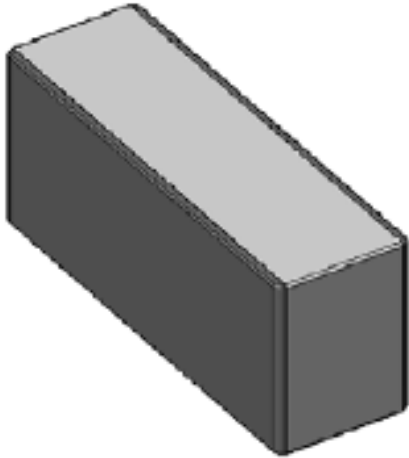


850/1900/2100MHz Triple band diversity RX Ceramic Antenna

Pulse Part Number CW3044



Features

- PIFA antenna
- Triple band operation, single feed point
- SMD compatible
- Lead free materials
- Size W x L x H (3x 12 x 4 mm)
- RoHS Compliant

Applications

- Triple band US GSM/WCDMA
- 850MHz/1900/2100MHz

Electrical specifications @ +25 ° C

Note: Performance figures are measured when antenna is mounted on blank PCB covered with plastic covers

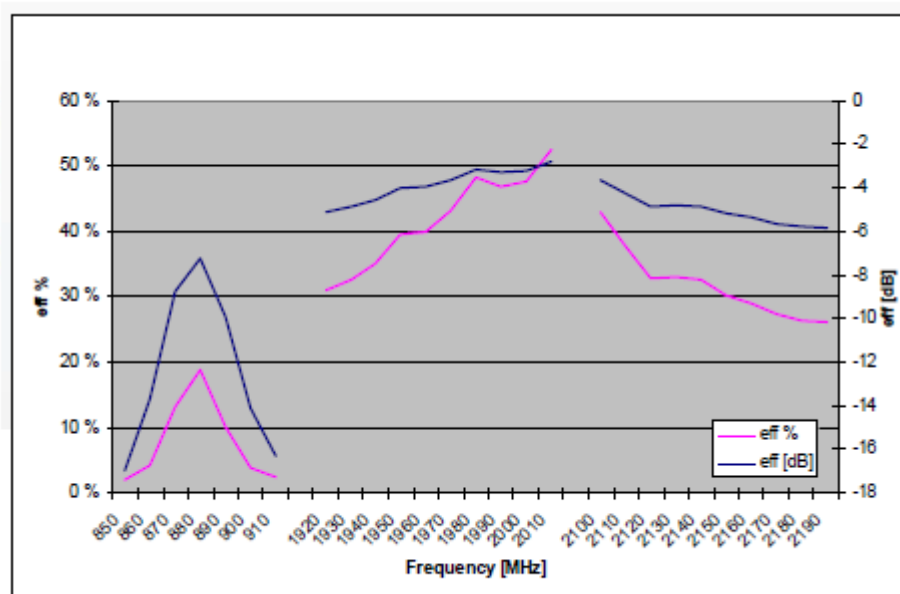
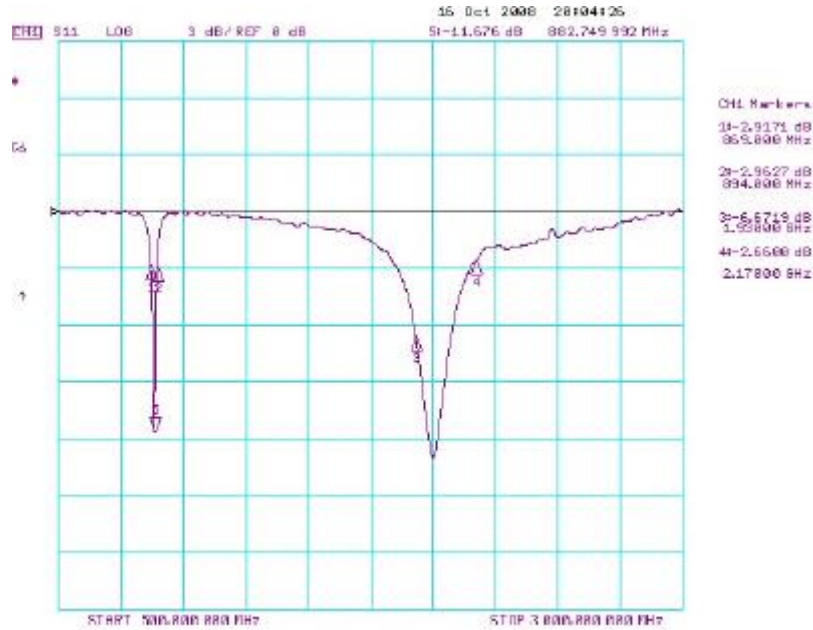
Frequency Range [MHz]	Efficiency [%]/[dB]	Impedance [Ω]	Operating Temperature [$^{\circ}$ C]
869-894	19 / -7.2 (peak)	50	-40 to +85
1930-1990	47 / -3.3 (peak)	50	-40 to +85
2110 – 2170	38 / -4,2 (peak)	50	-40 to +85

850/1900/2100MHz Triple band diversity RX Ceramic Antenna

Pulse Part Number CW3044

Typical Electrical Characteristics (T=25 ° C)

Typical Return Loss and Efficiency (Blanc PCB)



Contact: mobiledeviceantenna.sales@pulseelectronics.com